

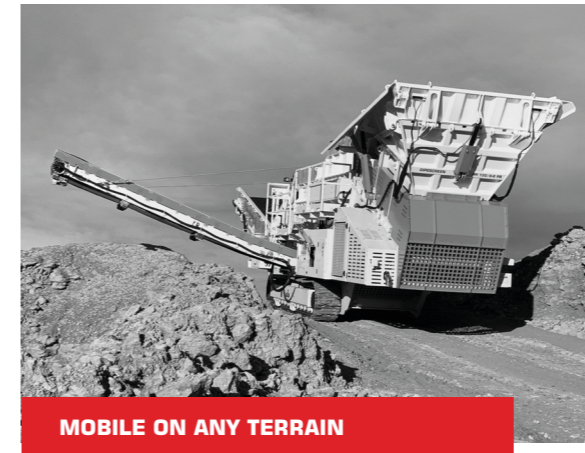
REMOVAL OF CONTAMINATION IN GLUTINOUS APPLICATIONS – THE GIPO RR IS THE IDEAL METHOD OF PREPARING PURE CRUSHED MATERIAL.



TECHNICAL DATA	RR 100-8-8	RR 130-8-8	RR 130-10-10
Weight**			
Operating weight (kg)	55,000 – 62,000	81,000 – 86,000	87,000 – 92,000
Transport weight, plant (kg)	53,000 – 60,000	79,000 – 84,000	85,000 – 90,000
Power unit, drive			
Drive power (kW)	160	235	235

PLANT EQUIPMENT

Feed hopper			
Feed perform. up to approx. (t/h)***	300	500	600
Feed material size max. WxHxL (mm)	800x800x1,000	1,000x1,000x1,200	1,000x1,000x1,200
Hopper volume (m³)	4 (7)	6 (10)	6 (10)
Feed apron conveyor			
Useful width (mm)	900	1,200	1,200
Roller grizzly 1st stage			
Useful width (mm)	970	1,270	1,270
Gap dimension (mm)	40 – 80	40 – 110	40 – 110
Number of rollers	8	8	10
Roller grizzly 2nd stage			
Useful width (mm)	970	1,270	1,270
Gap dimension (mm)	40 – 80	40 – 110	40 – 110
Number of rollers	8	8	10
Conveyor under roller grizzly			
Belt width (mm)	1,000	1,200	1,200
Roller grizzly side discharge conveyor			
Belt width (mm)	1,000	1,000	1,000
Discharge apron conveyor			
Useful width (mm)	980	1,280	1,280



MOBILE ON ANY TERRAIN



CLEAN SEPARATION



HIGHEST THROUGHPUT

CONFIGURATION OPTIONS

- Feed**
 - Manual or hydraulic hopper wall height increase
 - Wearing lining
 - Quick-release locking of the feed unit to reduce the transport weight
 - Hopper volume up to 40 m³
- Roller grizzlies**
 - Large bearings
 - Possible to expand to 10 rollers
 - 3rd stage with additional roller grizzly possible
 - Gap dimension can be selected as required (up to 110 mm)
- Drive unit**
 - Drive systems:
 - Diesel-hydraulic
 - Electro-hydraulic
 - Choice of various engine manufacturers

- Material fractions**
 - Material screened out can be conveyed to the heap separately or combined
 - Combination of oversize material with aid of conveyor under the roller grizzly operated in reverse
 - Hoods and covers
 - Extension of the discharge apron conveyor for perfect transfer to downstream crushing plant
- Safety and working conditions**
 - Plant lighting
 - Central lubrication
 - Refuelling pump
 - Radio remote controls
 - Country-specific standards
- Colour scheme and logos**
 - Plant colour scheme as per customer wishes
 - Plant labelling

** The weights are indicative. They may vary from the information stated depending on the configuration.

*** The values stated in relation to the crushing performance, feed performance and feed material lump size are heavily dependent on the characteristics of the feed material (condition/abrasiveness, particle size distribution, portion of fine material, etc.), the required final particle size, optimal operation of the plant and feeding, as well as the correct adjustment of the plant.